

3rd Party Exports (to .dcm)

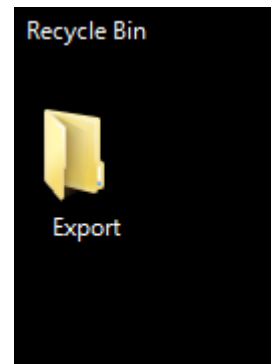
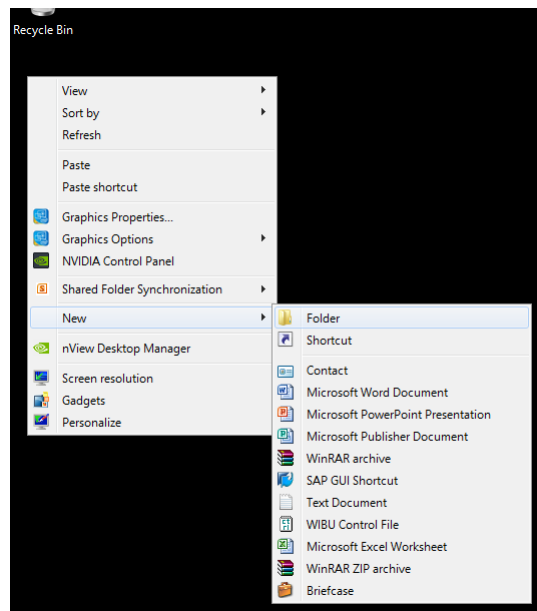
Some third party softwares that accept 3D CBCT volumes require a format other than what is provided through the default Output features of Sidexis 4. For softwares that require the Dicom multifile or .dcm format, you will need to set up the 3rd party export.

- 1: Create a folder to receive the exported files

Right-Click on your desktop and select New > Folder.

This will create a new folder on your desktop named "New Folder".

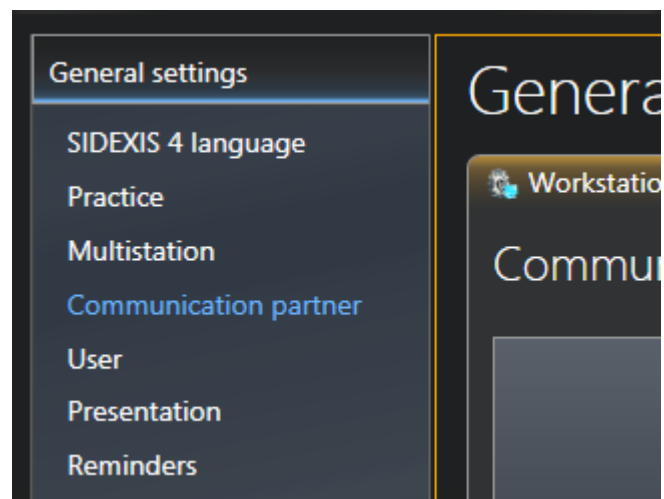
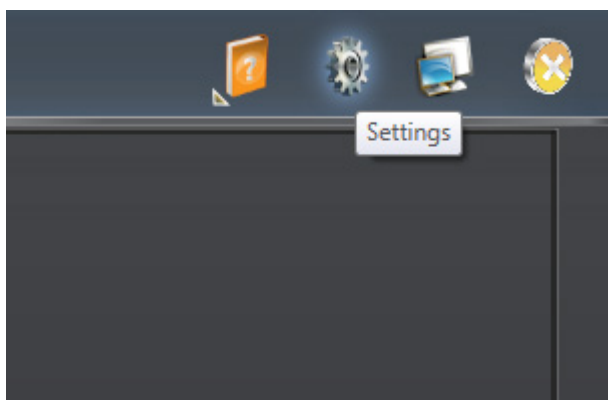
Rename this to something memorable. For this guide, we will use "Export".



- 2: Navigate to Communication Partner settings

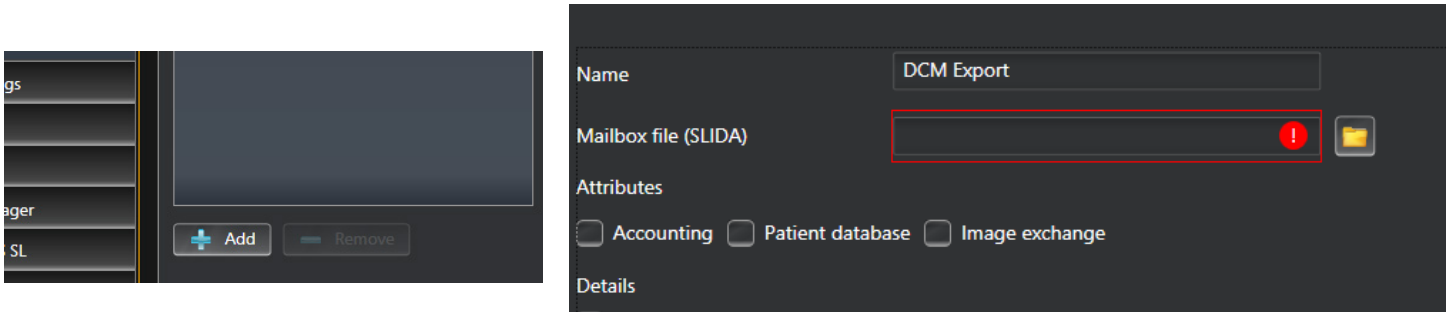
In Sidexis 4, navigate to Settings using the gear at the top right.

Open Communication partner from the General settings menu on the left.



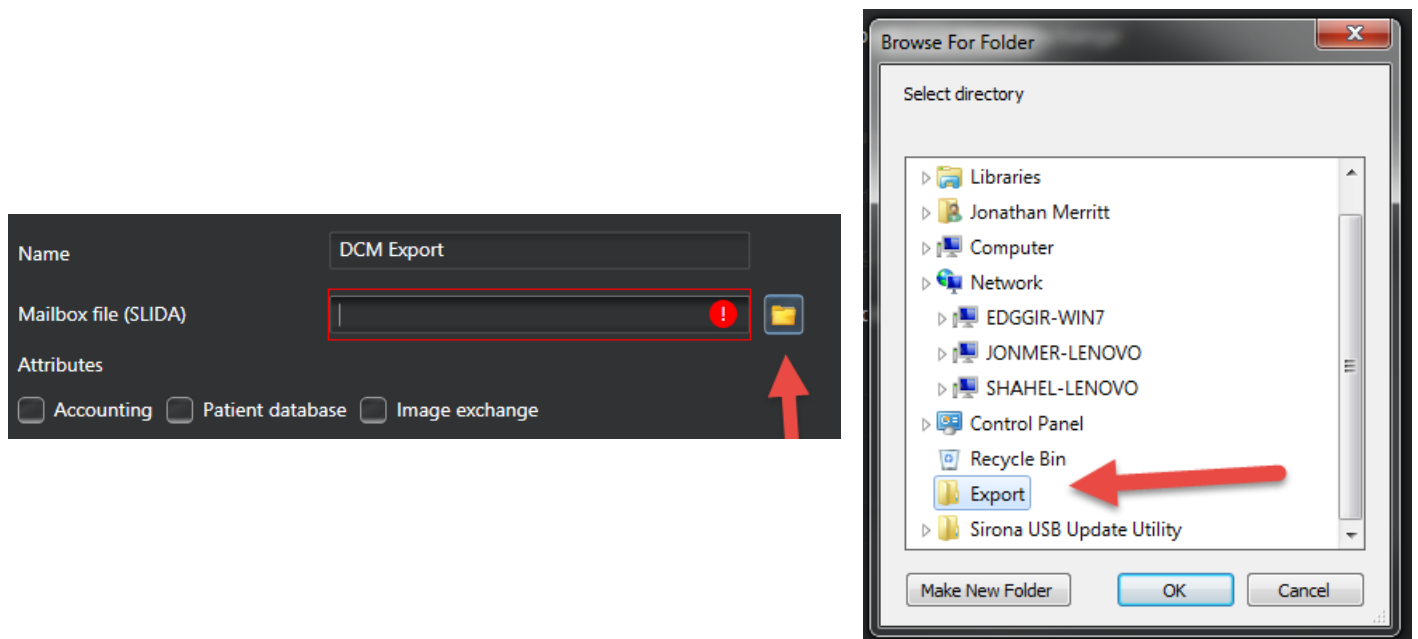
3: Create new Communication partner

At the bottom of the Communication partner pane, click Add to create a new Partner. Add a name for the new partner. For this guide we are using "DCM Export".



4: Point your Partner to the correct folder

Next to "Mailbox file (SLIDA)", select the browse button to select your folder. In the Browse for folder window, find and select the folder that was created in step 1.



5: Select export options

In Attributes, select Patient database and Image exchange.

In Details, select Integrate patient name in image name.

In SLIDA 3D, select *.dcm and Third-party manufacturer.

- We must enter a name into the profile field. For this guide we are using Nobel.

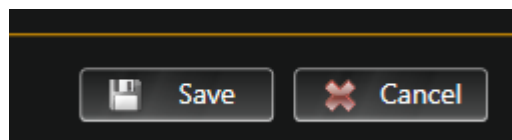
The screenshot shows a settings dialog box with the following sections and options:

- Mailbox file (SLIDA):** Users\jmerritt\Desktop\Export\DCM Export.sdx
- Attributes:**
 - Accounting
 - Patient database
 - Image exchange
- Details:**
 - Receives copies of new exposures automatically
 - Report internal patient ID if external ID is missing
 - Integrate patient name in image name
 - Can be accessed via program change
- Name and path of software:** (Empty text field)
- Window class name:** (Empty text field)
- SLIDA 3D:**
 - Partner can receive 3D volumes
 - Output format:**
 - DICOMDIR
 - *.dcm
 - Facescan(OBJ)
 - Third-party manufacturer
 - Profile:** Nobel
- SIDEXIS:** SIDEXIS

6: Select export options

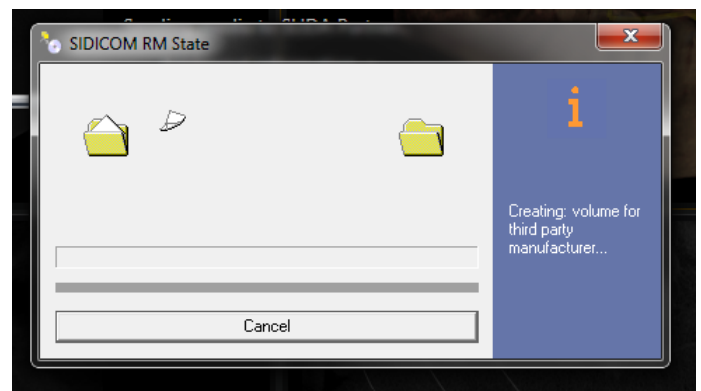
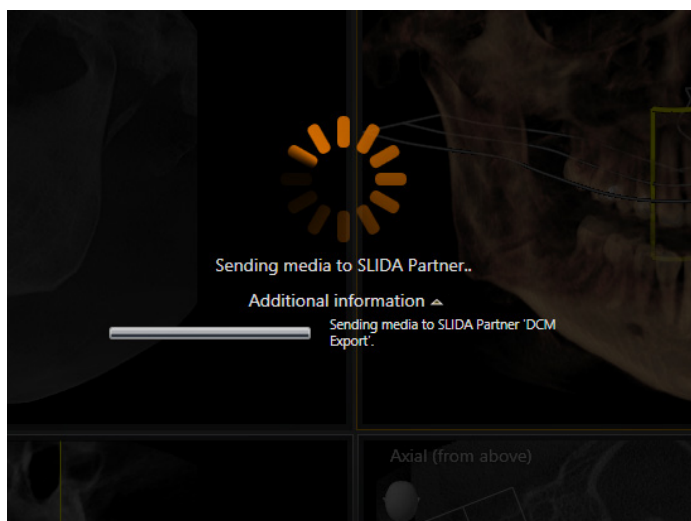
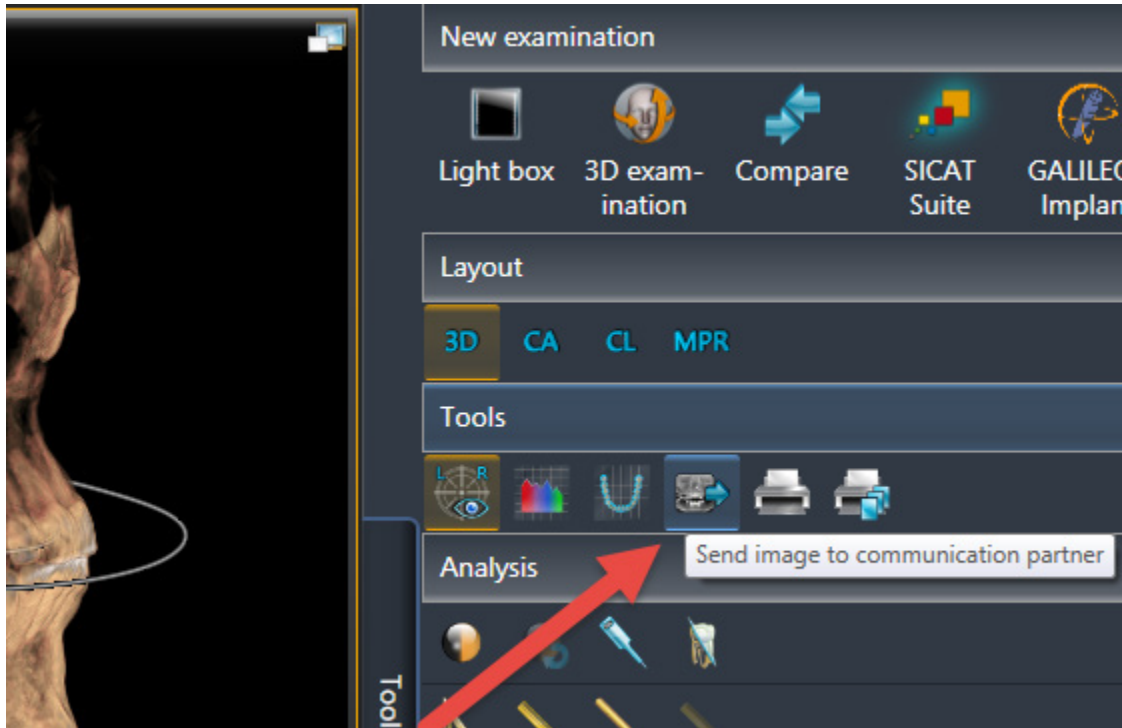
Click the Save button at the bottom right to save the settings.

Close Sidexis 4.



7: Select export options

With your image open in 3D Examination, select “Send image to communication partner”. This will immediately start saving the image to the folder created in step 1.



7: Verify the exported files

Navigate to the folder create in step 1.

You will see a folder with the patient's name.

This folder and its contents are your exported image.

From here, it can be written to disk, flash drive, or sent through file sharing.

